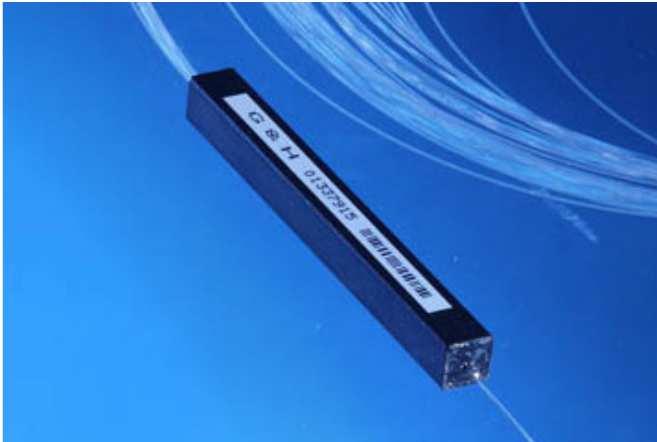
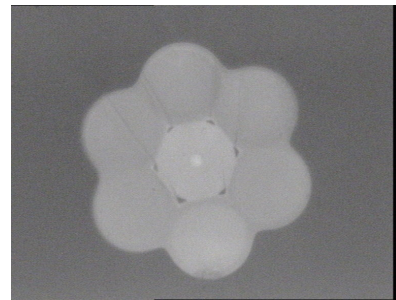


Gooch & Housego



Multimode Power Combiner with Signal Feed-through for 2 μ m Operation



G&H combiners provide a high efficiency means of combining light from several multimode sources into one fibre.

G&H proprietary manufacturing techniques allow the precise fusion of input fibres around a central signal feed-through fibre and a dual clad output fibre providing high coupling efficiency over a wide pump wavelength range.

Available in a standard (6+1)x1 configuration, the combiner can be fabricated from a range of industry standard and customised fibres for ease of splicing to commercially available laser diodes and fibre applications.

Custom options cover large mode area (LMA) signal feed-through fibres, dual clad output fibres and port count / configurations and are available on request.

Please contact the sales team for further information.

Key Features:

- 1.9 μ m to 2.1 μ m Signal feed-through available
- All fibre construction
- High power design
- High Coupling Efficiency
- Custom configurations available

Applications:

- Cladding pumped fibre lasers
- Cladding pumped fibre amplifiers
- Telecoms
- IR Imaging
- Biomedical
- Industrial
- Defence
- IR Counter measures

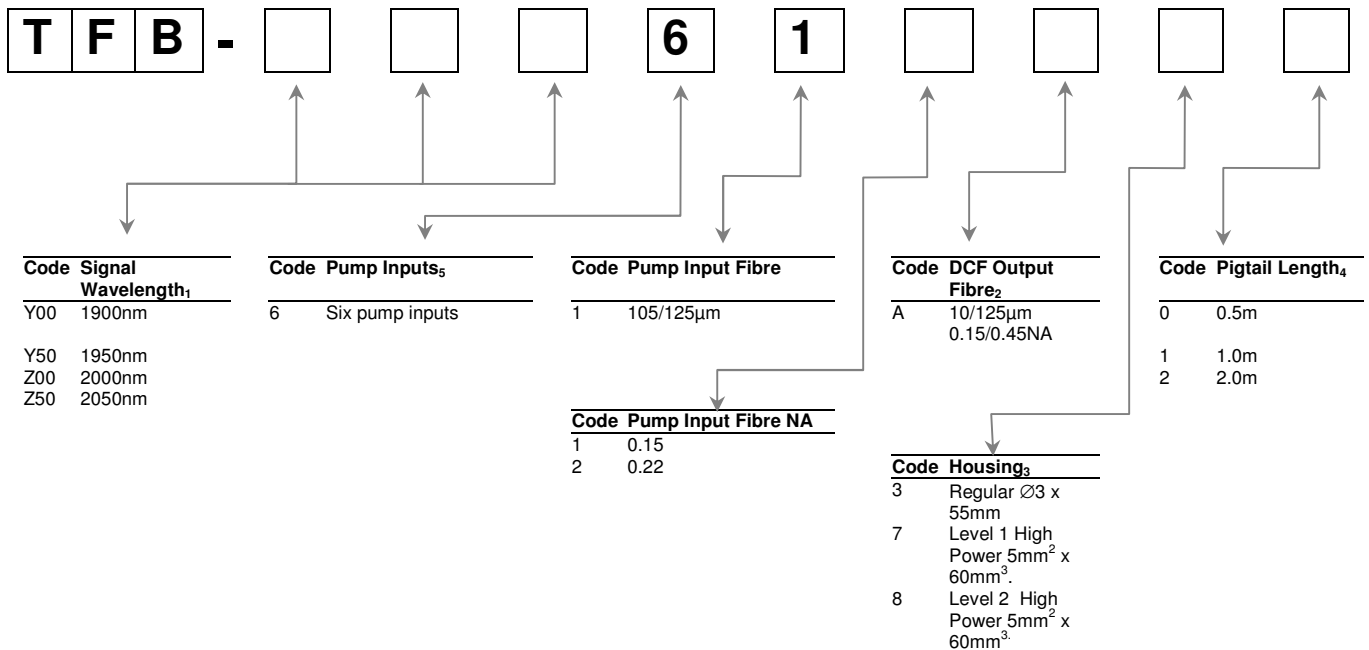
Optical Specifications₁

Parameter	Specification		Unit
Pump Input Fibre NA	0.15	0.22	-
Pump Input Wavelength ₂	750 to 850		nm
Signal Input Wavelength	1900 to 2100		nm
Pump (MM) Transmission Efficiency ₂	≥ 90 (Typ > 95)	≥ 90 (Typ > 95)	%
Signal Transmission Efficiency ₃	≥ 80 (Typ > 90)		%
Return Loss/Directivity	>40		dB
Operating Temperature	-5 to +75		°C
Storage Temperature	-40 to +85		°C

1. All specifications are for operation at room temperature.
2. MM Transmission efficiencies based on typical system mode fill conditions and 0.5m pigtails. Reported at 790nm as standard.
3. Signal (feed-through) transmission efficiency reported at centre wavelength; specification typical for centre wavelength ±15nm (minimum).

Ordering Code Information

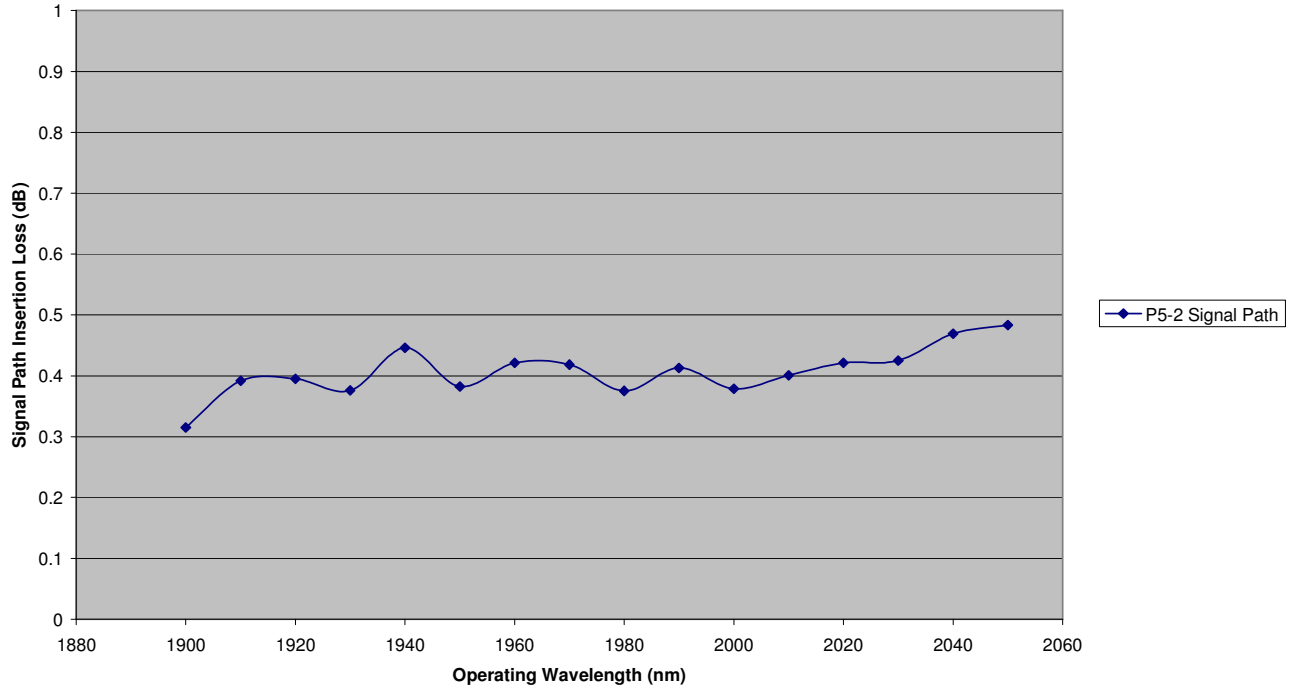
Example: TFB-Y50612A71 (6+1x1 Tapered Fibre Bundle with 1950nm Signal input, six 105/125µm 0.22NA pump inputs, 1950nm core DCF Output in Level 1 HP housing with 1.0m pigtails).



1. Signal wavelengths assume the use of industry standard single-mode fibre, double clad and LMA available on request.
2. Other fibre types available, please contact the sales team for further information. Fibres are passive.
3. Maximum housing lengths. Note- Adequate heat-sinking is required for high power operation. See Heat Sinking notes (PEC 0134) on website or consult Sales Dept.
4. Minimum pigtail lengths.
5. Other pump port count available, please contact the sales team for further information.

Typical Optical Performance

ISLA 1950nm 6+1x1 Combiner (SFO2840 - 30172858)



ISLA 1950nm 6+1x1 Combiner (SFO2858 - 30172858)

